

Properties for Sale

1 57353 Twentynine Palms Outerhig, Yucca Valley, CA 92284



Property Details

Price	\$1,299,000
No. Unit	0
Gross Leasable Area	8,850 SF
Total Lot Size	0.36 AC
Property Type	Retail
Property Sub-type	Freestanding
No. Stories	1
Building Class	B
Year Built	1985
Zoning Description	92/6
Tax ID/APN	0595-192-40
Status	Active

Property Notes

Sale Notes

Location! Location! Two separate buildings on .71 acres on outer 29 Palms Hwy in the heart of Yucca Valley. Connected by a courtyard, they are on 1 parcel. Building # 1 has 3 units. 4425 SQ. Ft. 2 units are 1500 Sq. Ft., each with .50 bath and kitchen sink. 1 unit is 1425 Sq. Ft. with .75 bath and kitchen sink. Building # 2 is also 4425 Sq. Ft. 2 units are 1500 Sq. Ft. with .50 baths and kitchen sinks. 1 unit 1425 Sq. Ft. with .50 bath and kitchen sink. They are in excellent condition. Pride of ownership. Built by and cared for by owner. Each unit has HVAC, It has a foam covered roof, natural gas and 50 parking spaces. With the exception of one renter, all have been there for more than 15 years. Some much longer. Possible rent increase with new buyer. OWNER WILL CARRY.

In the heart of Yucca Valley. Just East of Old Womans Spring Rd. (Hwy. 247). on frontage rd of 29 Palms Hwy. Great exposure with lots of Parking.

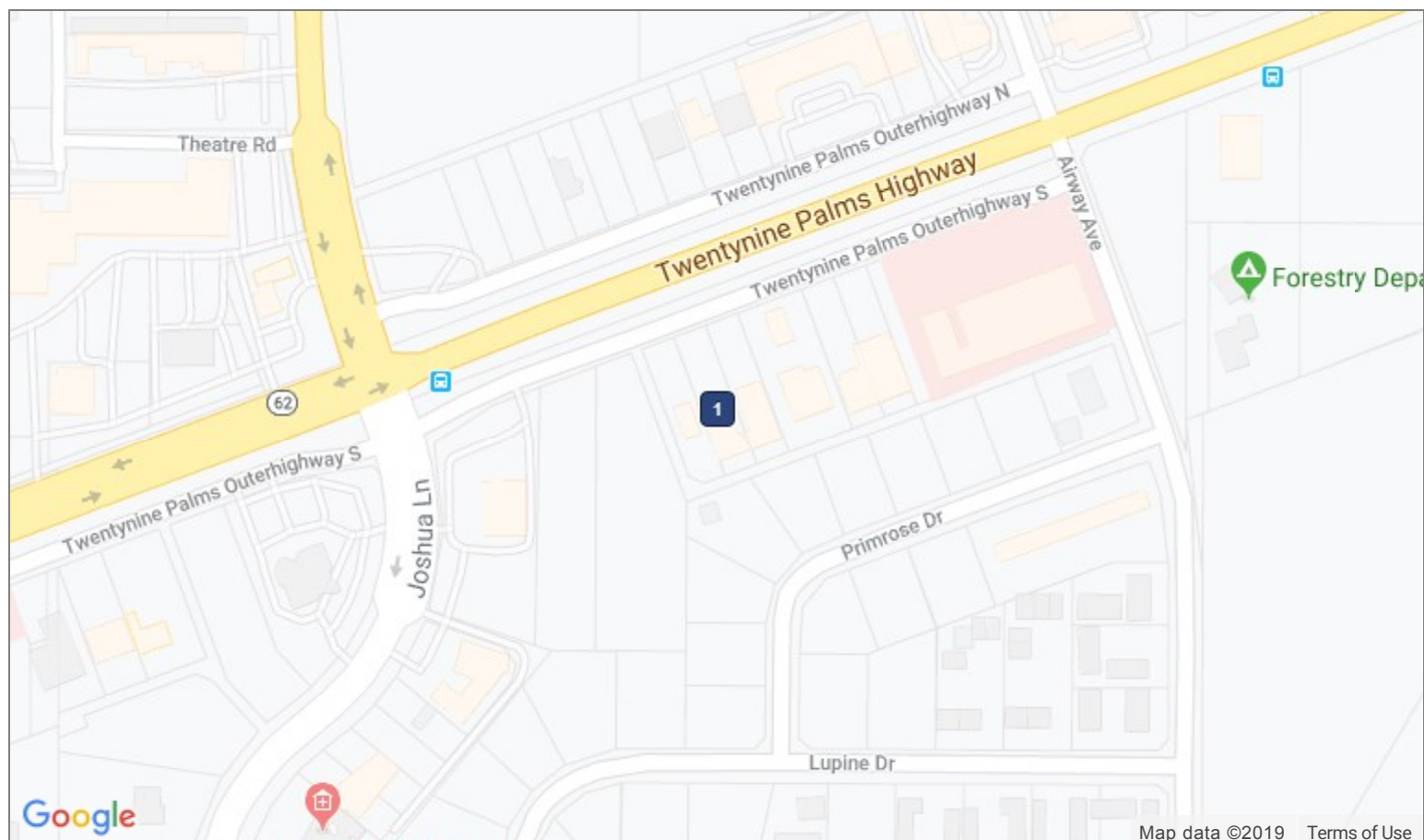
Highlights

Excellent Location

Photos



Map

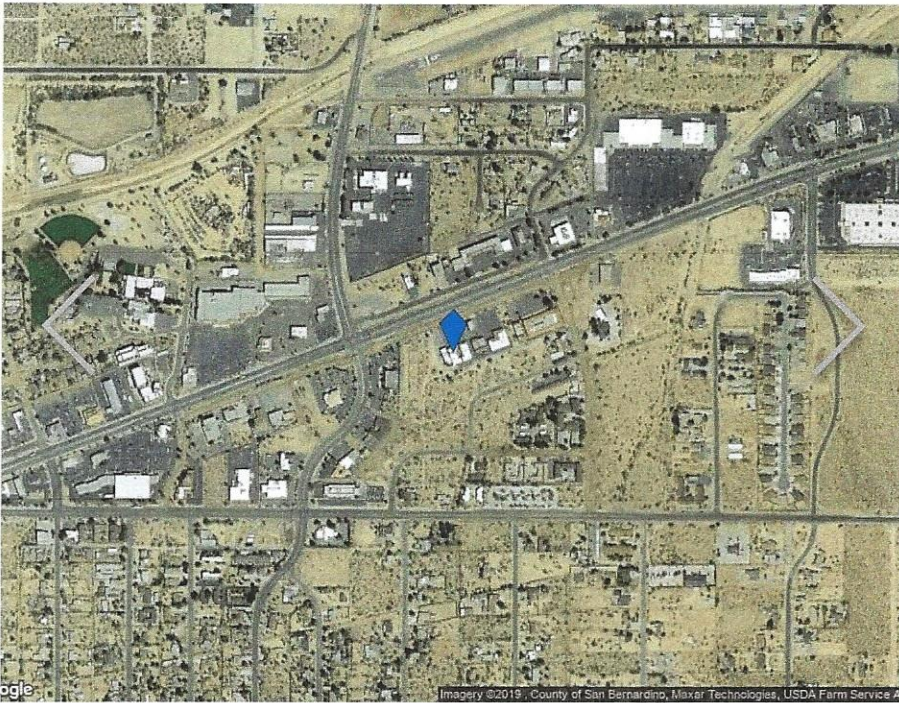


1 57353 Twentynine Palms Outerhighway N
Yucca Valley, CA 92284

FINANCIAL SUMMARY (ACTUAL - 2017)	ANNUAL	ANNUAL PER AC
--	---------------	--------------------------

Gross Rental Income	-	-
Other Income	-	-
Vacancy Loss	-	-
Effective Gross Income	\$71,400	351,433.22
Taxes	\$8,400	41,345.08
Operating Expenses	\$5,100	25,102.37
Total Expenses	\$13,500	66,447.46
Net Operating Income	\$57,900	284,985.76





DEMOGRAPHICS

1 mile



HOUSEHOLD INCOME

